

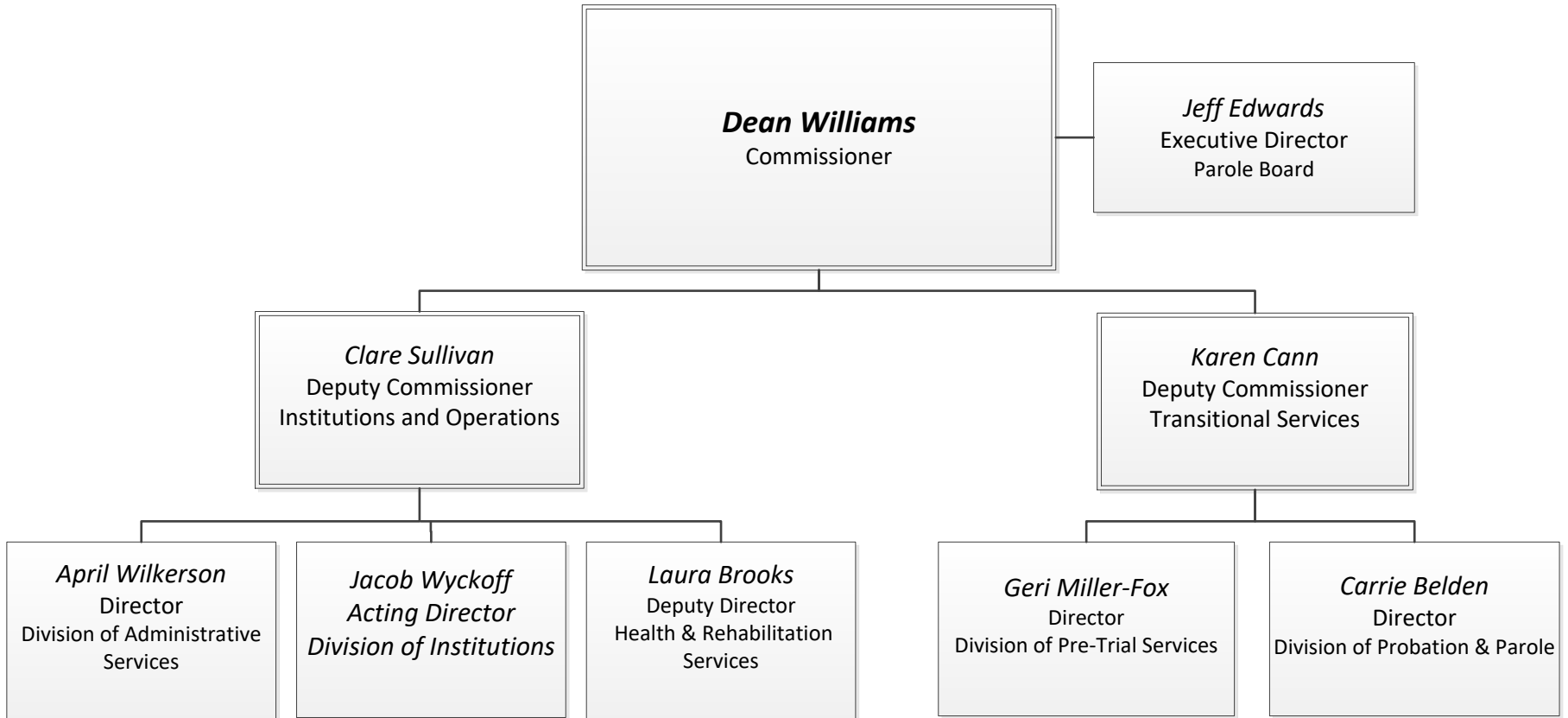
DEPARTMENT OF CORRECTIONS



South West Alaska Municipal Conference 1 March 2018

Organizational Structure

1



DOC at a Glance

2

- Alaska is one of six states in the nation that operates a unified correctional system (*Alaska, Connecticut, Delaware, Hawaii, Rhode Island, and Vermont*)
- In FY2017, DOC booked 29,481 offenders into its facilities
 - 17,565 were unique offenders
 - 2,271 were non-criminal Title 47 bookings
 - (a 19% decrease from last year)
- During FY2017 there was a daily average of 5,111 offenders in a prison, community residential center (CRC) or on electronic monitoring (EM)
- During FY2017 there was a daily average of 5,187 offenders on probation or parole

Division of Institutions

3

Provide secure confinement and supervision of male and female, sentenced and unsentenced adult felons and misdemeanants that are committed to the care and custody of the Alaska Department of Corrections.

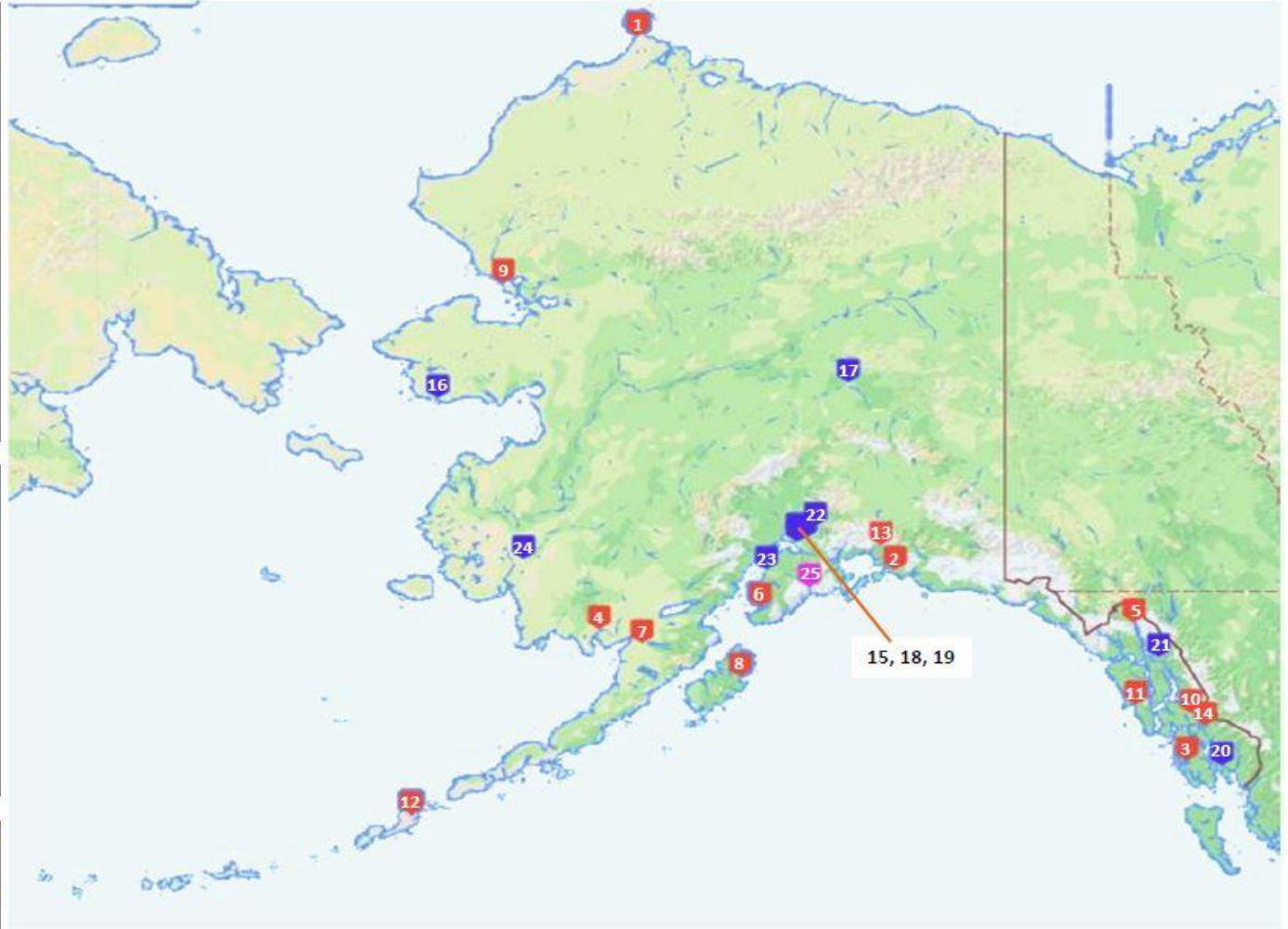
Division of Institutions Secure Confinement

4

COMMUNITY JAILS	
1	Barrow
2	Cordova
3	Craig
4	Dillingham
5	Haines
6	Homer
7	King Salmon
8	Kodiak
9	Kotzebue
10	Petersburg
11	Sitka
12	Unalaska
13	Valdez
14	Wrangell

STATE PRISONS		
15	Anchorage	ACC
16	Nome	AMCC
17	Fairbanks	FCC
18	Point McKenzie	GCCC, PMCF
19	Eagle River	HMCC
20	Ketchikan	KCC
21	Juneau	LCCC
22	Palmer	MSPT
23	Kenai	WCC
24	Bethel	YKCC

STATE PRISON & COMMUNITY JAIL		
25	Seward	SCCC



Community Jails

5

- Provide service and support in communities that do not have DOC facilities
- Provide short-term detention and confinement (awaiting trial, serving short sentences, T47)
- Provide 44 beds out of the 157 overall contract jail beds in the region

Background

6

Community Jails moved from DPS to DOC in the Mid 1990s

- Assessment in Year 2000 (Community Jail Initiative)
 - Prisoner population throughout the state on the rise in all locations
 - Community Jails needed funding for ops, training and capital
 - Some Jails were overcrowded, needed upgrading and expansion
 - Overcrowding impacted DOC facilities throughout the state
 - Service in various areas was inconsistent due to lack of resources and staff not integrated into the DOC system
 - Liability was increasing due to deterioration of facilities and level of service

Current Assessment

7

- DOC prisoner population declined beginning in 2015 and has stabilized until recently - averaging 89% capacity, jails showing more of a decline with few exceptions (Kodiak, North Slope Borough, Dillingham)
- Jails are structurally sound and are meeting DOC audit standards
- Community Jails have become a greater player of the unified system and have resulted in consistency in processing offenders through the system, now several jails have agreed to assist in Pretrial Enforcement

Funding

8

- During the legislative session in 2015 the Regional and Community Jails Program was reduced in FY16 by 33.25% due to the state's budget crisis
- Reduced funding was allocated in this year based on bed utilization

Community Jail	Facility Funding FY12	Facility Funding FY15	Facility Utilization FY14	Percentage FY15 Funding Lvl	Final Funding FY16
Dillingham	\$463,963	\$658,564	75%	80%	\$526,851
Kodiak	\$968,335	\$1,239,440	100%	80%	\$991,552
Unalaska	\$641,355	\$784,012	40%	55%	\$431,207
Bristol Bay	\$171,843	519,526	25%	55%	\$285,739

Current Bed Count & Length of Stay

9

- **Dillingham – 8 bed facility, 20 day maximum**
- **Kodiak – 22 bed facility, 30 day maximum**
- **Unalaska – 10 bed facility, 30 day maximum**
- **Bristol Bay – 4 bed facility, 15 days maximum**

Average Bed Use

10

Dillingham: FY15 - 46 prisoners per month
FY16 - 55 per month
FY 17 - 52 per month
FY 18 - 61 per month (to date)

Kodiak: FY15 - 100 per month
FY16 - 78 per month
FY17 - 66 per month
FY18 - 49 per month (to date)

Unalaska: FY15 - 20 per month
FY16 - 22 per month
FY17 - 17 per month
FY18 - 9 per month (to date)

Bristol Bay: FY15 20 per month
FY16 11 per month
FY17 6 per month
FY18 5 per month (to date)

Pretrial components

11

- **1. Assessment & Database Collection:**
- **2. Community Pretrial Electronic Monitoring**
- **3. Community Pretrial Monitoring and Pretrial Supervision**
- **4. Diversion Programs**

Pretrial Support

12

- **Dillingham – Agreed to 2 of 4 Pretrial components**
 - **Assessment & Database Collection: Nov 1, 2017 through June 30, 2018 – funding \$5,678**
 - **Community Pretrial Electronic Monitoring: Nov 1, 2017 through June 30, 2018 – funding \$13,248**
- **Kodiak – Agreed to 1 of 4 Pretrial components**
 - **Community Pretrial Electronic Monitoring: Nov 1, 2017 through June 30, 2018 – funding \$24,920**
- **Unalaska – No agreement for Pretrial components**
- **Bristol Bay – No agreement for Pretrial Components**

END

13

