



NOAA
FISHERIES
Alaska Region

SWAMC 30

Managing a \$4.2 Billion Fishing Industry in Times of Change

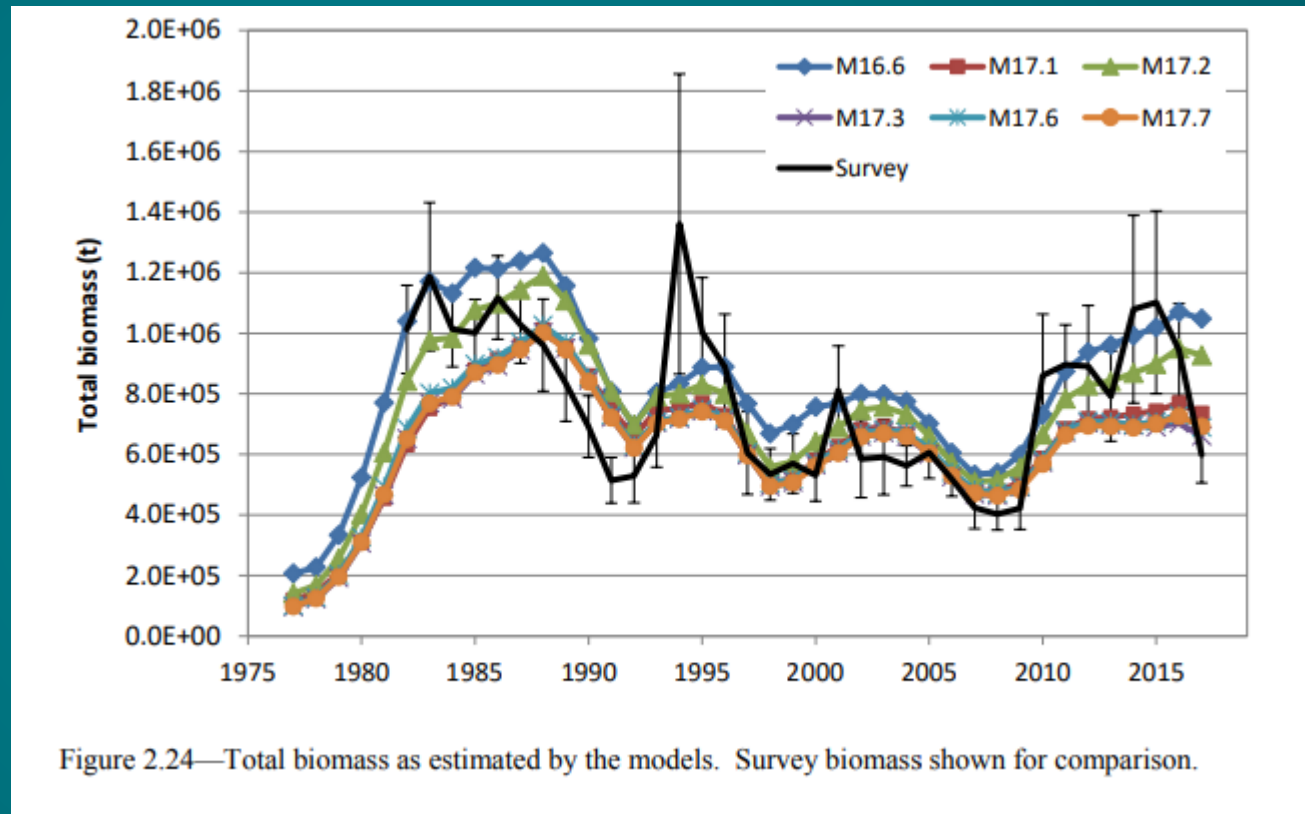
Glenn Merrill

March 2018

Bering Sea/Aleutian Islands Pacific Cod

2017 Biomass Estimates

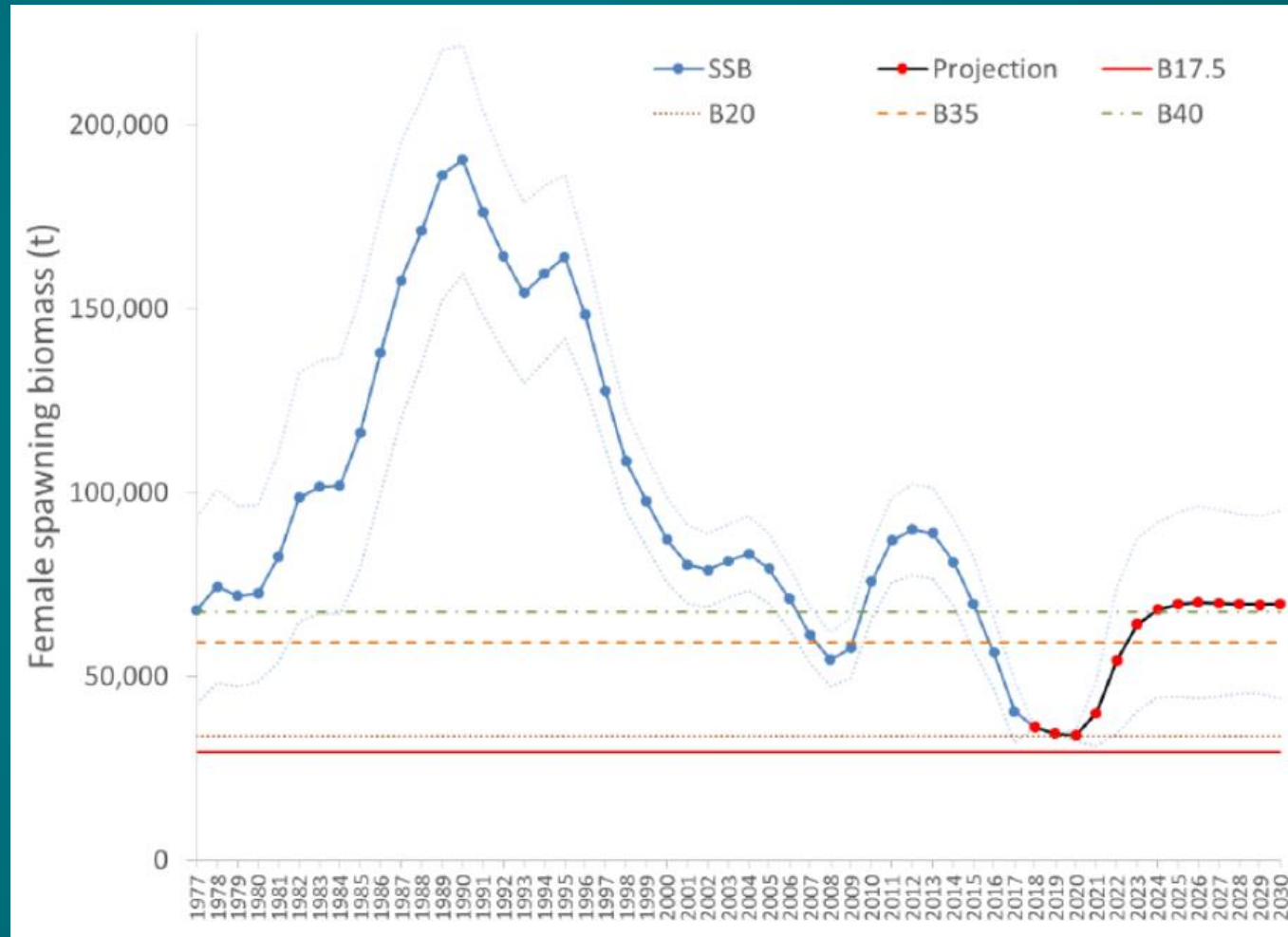
- **Mixed signals from ecosystem and models**
- Low recent recruitment
- High age 1 mortality
- Substantial amount of cod in the north with similar size composition to south.
- **Movement North?**



Gulf of Alaska Pacific Cod

2017 Biomass Estimates

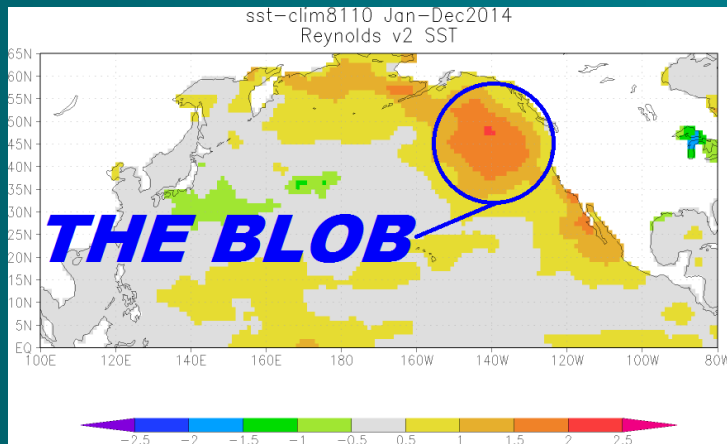
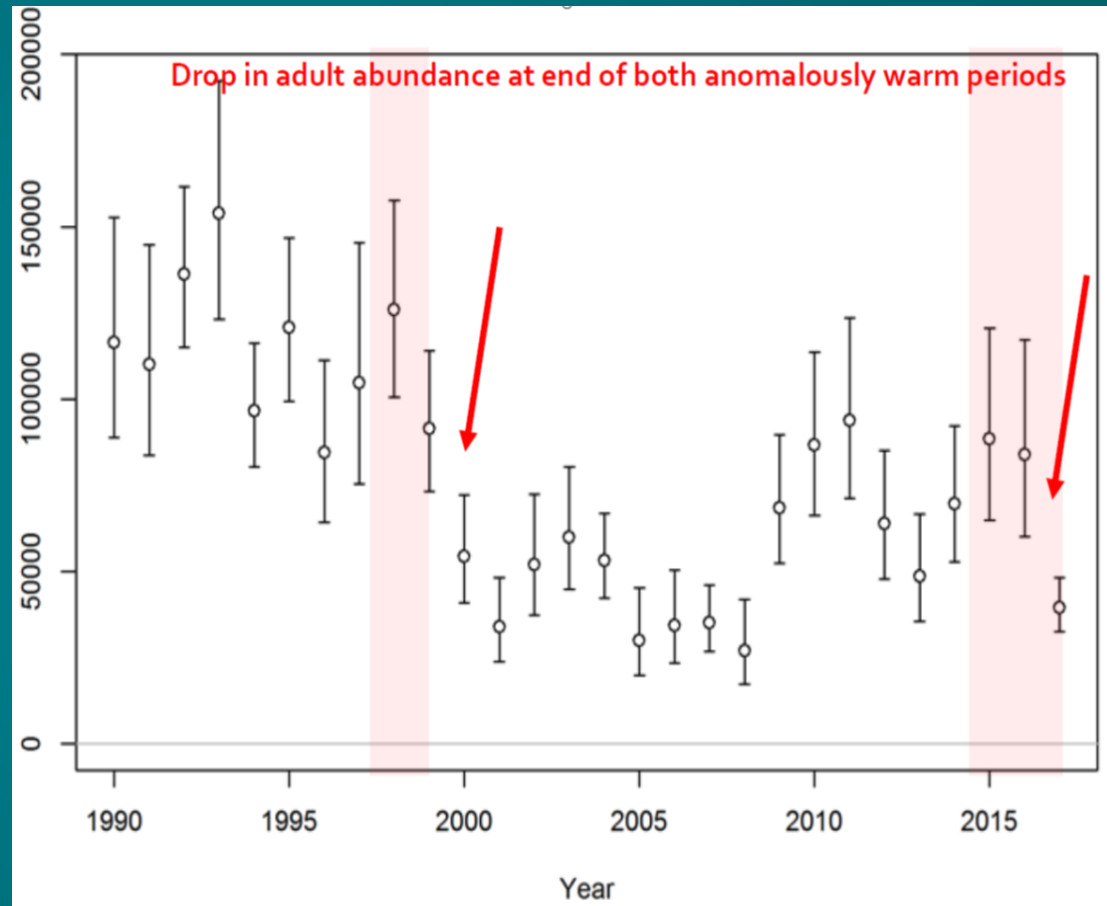
- ~ 74 % drop in catch limits from 2017
- Biomass projected to reach all-time low in 2020
- High mortality in 2011 and 2012, poor recruitment expected in 2013-2016
- Increase expected in 2021... assuming average recruitment



GOA Pacific Cod and Temperature

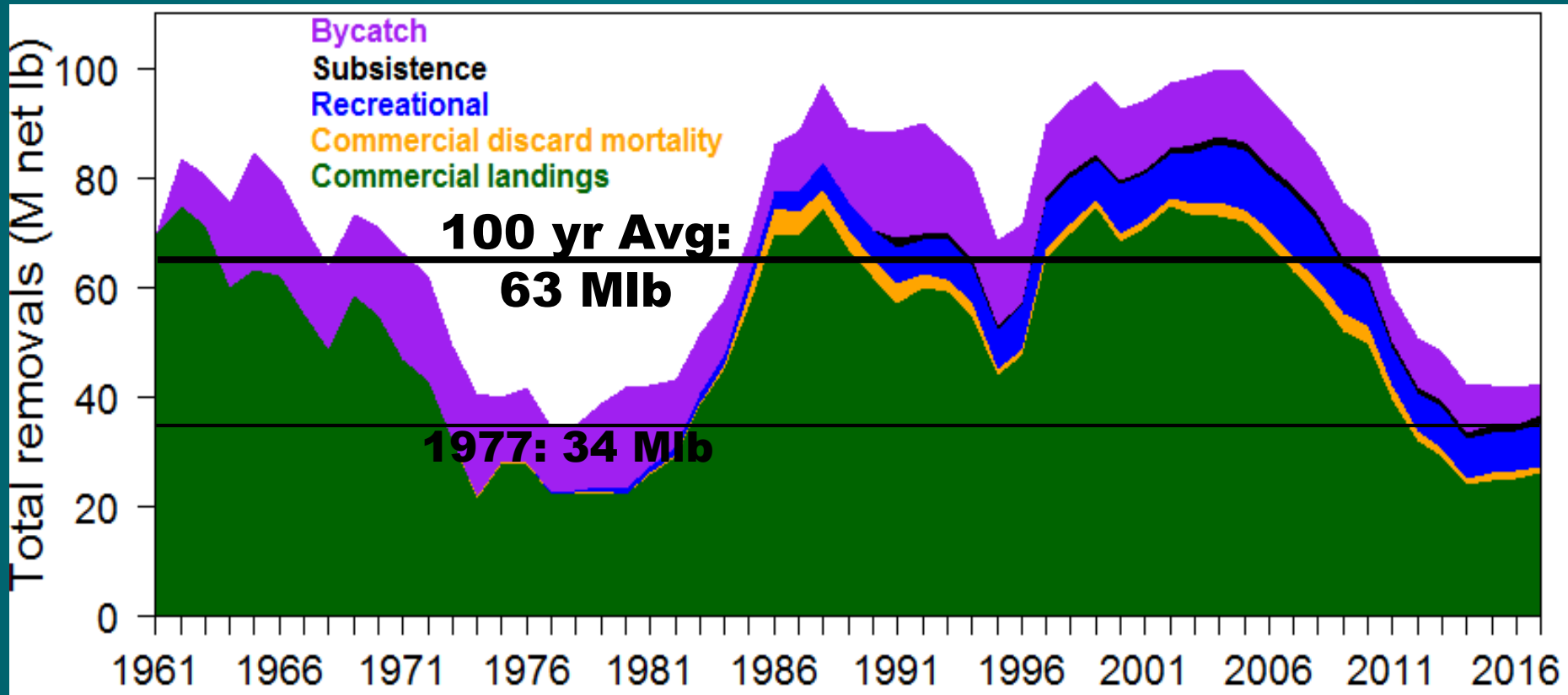


Pacific Cod Biomass

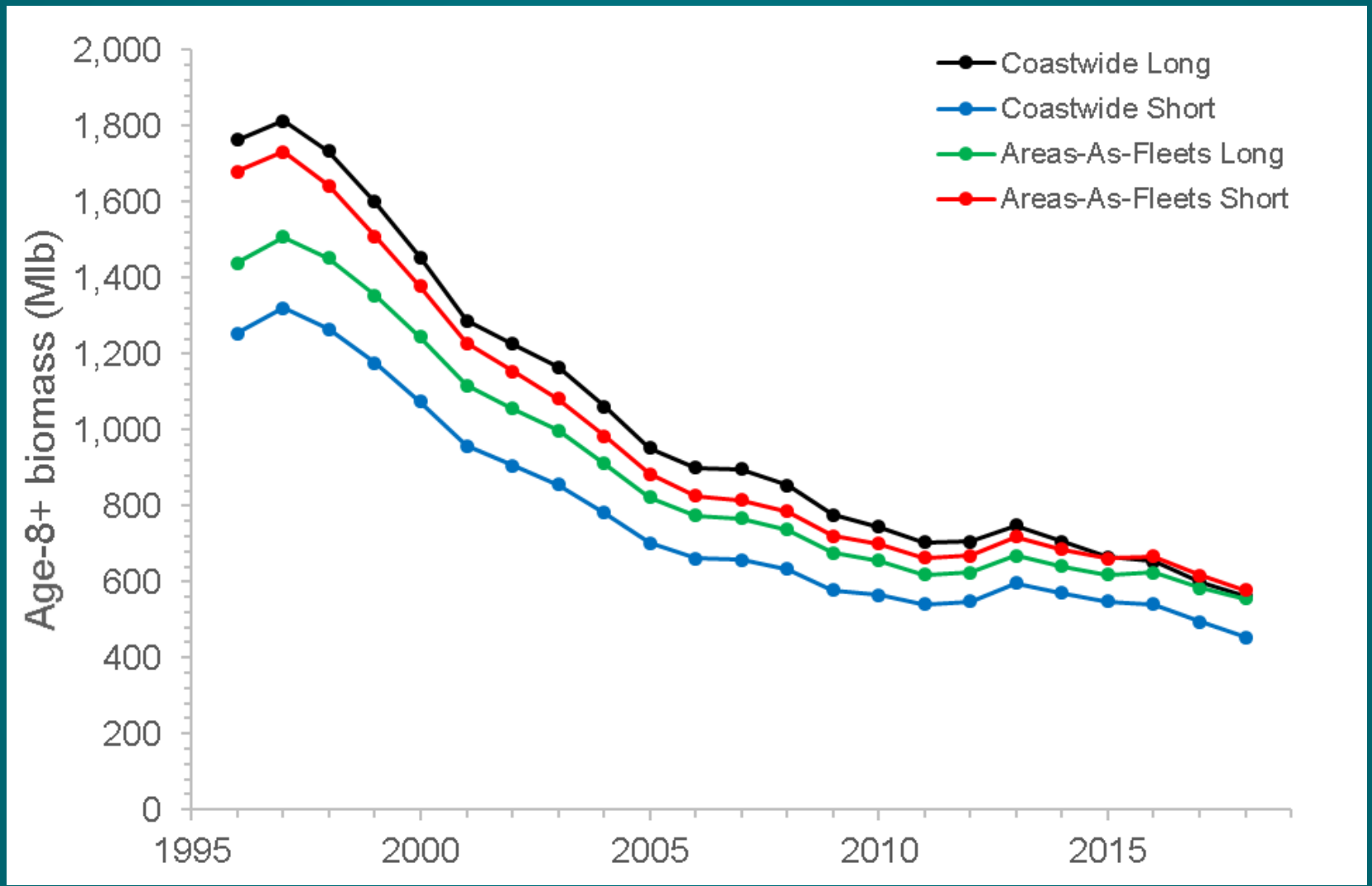


Pacific Halibut Coastwide Total removals

January 2018 IPHC Stock Assessment Presentation



Pacific Halibut Age 8+ Biomass



January 2018 IPHC Stock Assessment Presentation

Pacific Halibut Bycatch in Groundfish Fisheries

- **2017 halibut bycatch lowest on record**

- 2017 halibut bycatch is...

1,704 mt less than in 2014, **a 33 % reduction in three years**, and

2,947 mt less than in 2007, **a 47% reduction over 10 years**

- **Many ongoing and new efforts to minimize bycatch**

