



Designing Fish Processing Plants for the future

Alaska led all states in volume of landings in 2014 with 60%, and has for years

#2 Louisiana at 9%

#3 Washington State at 6%

Multiple Species come from Alaska



Customer Base is growing by approximately 6% per year So More Fish will be Eaten

Products have changed and expanded and will continue to develop:

Was:

Salted

Then:

Caned

Filleting WAS done in the Meat Market/Grocery Store

Now:

Portions

Smoked

Re-Formed Products from Trim and scrapings

Breaded

Par-Fried

Candied

Jerky

This means more and varied equipment in a plant

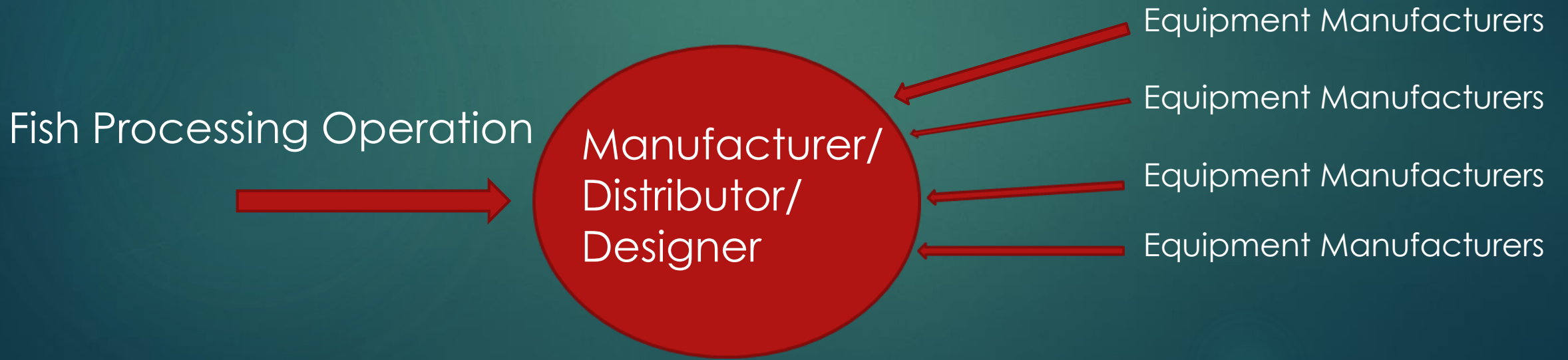
How it was done



Having 50 manufacturers call on a Processor and that Processor still needs to become an expert on the equipment to make an informed decision and have the staff to purchase, install and train themselves

How it can be done

Saves: Time
Infostructure
Labor



Distributor/Dealer/Designer/Manufacturer

- Provides Concepts
- Financing
- Plans
- Management of the Project

Coordination

- of Equipment (Carsoe's and other manufacturers)
- Shipping
- Installation
- Training
- Warranty/Service work

Customization by

- Species
- Location

Improved Automation

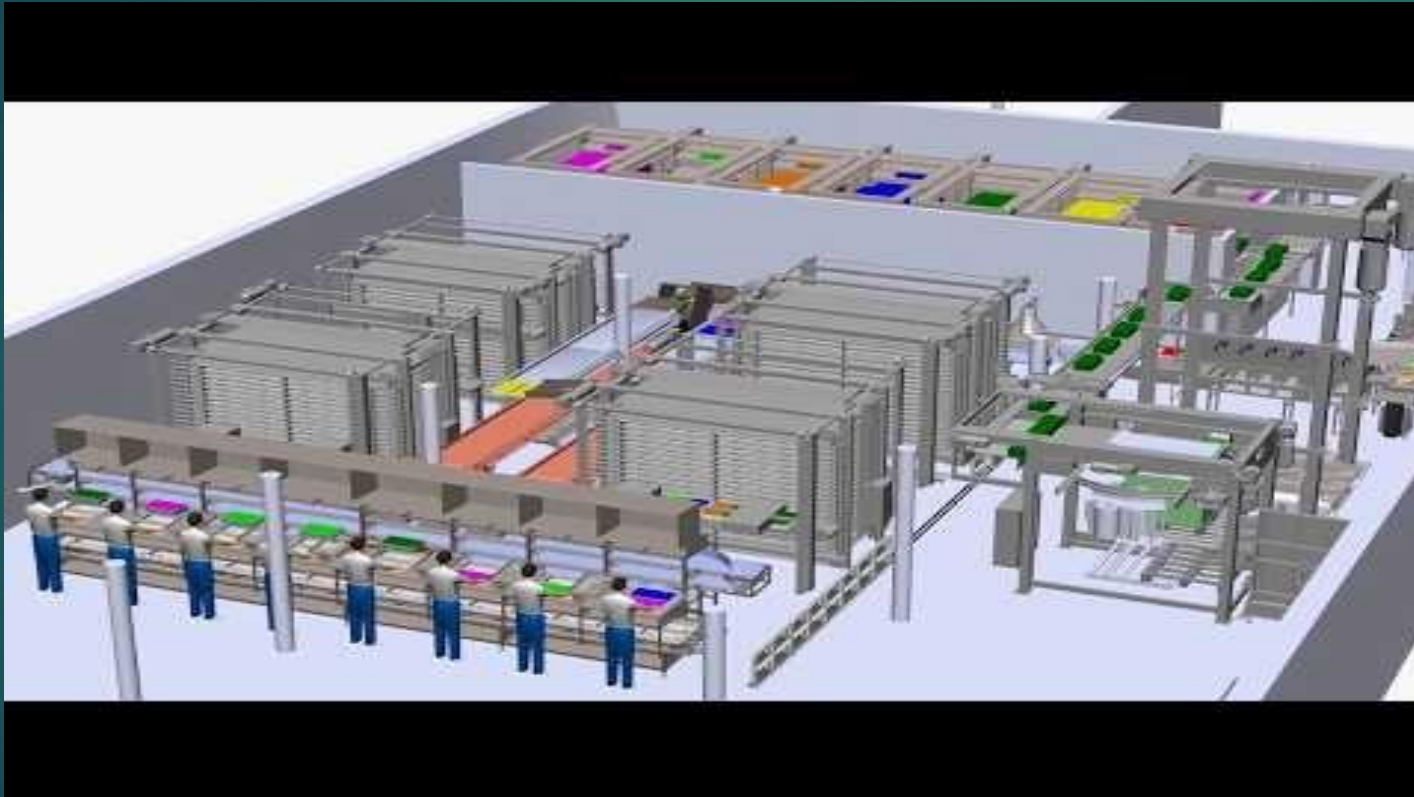
From Carsoe

- Automatic Palletizing
- Packing Line for Master Cartons with Strapping
- Plate Freezers, Vertical and Horizontal
- IQF Tunnel Freezers
- Weighing - Hopper Systems
- Packing Line for Freezing Frames
- Trimming Line
- Buffer Tank for Bleeding/Washing
- Fish Grading Systems
- Conveyor Systems



Vertical Plate
Freezer

Carsoe Sorting Facility with Plate Freezers



<https://www.youtube.com/watch?v=wdyGJg4uLAY>

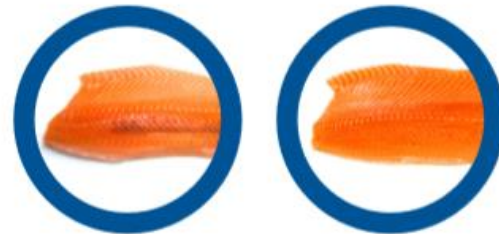
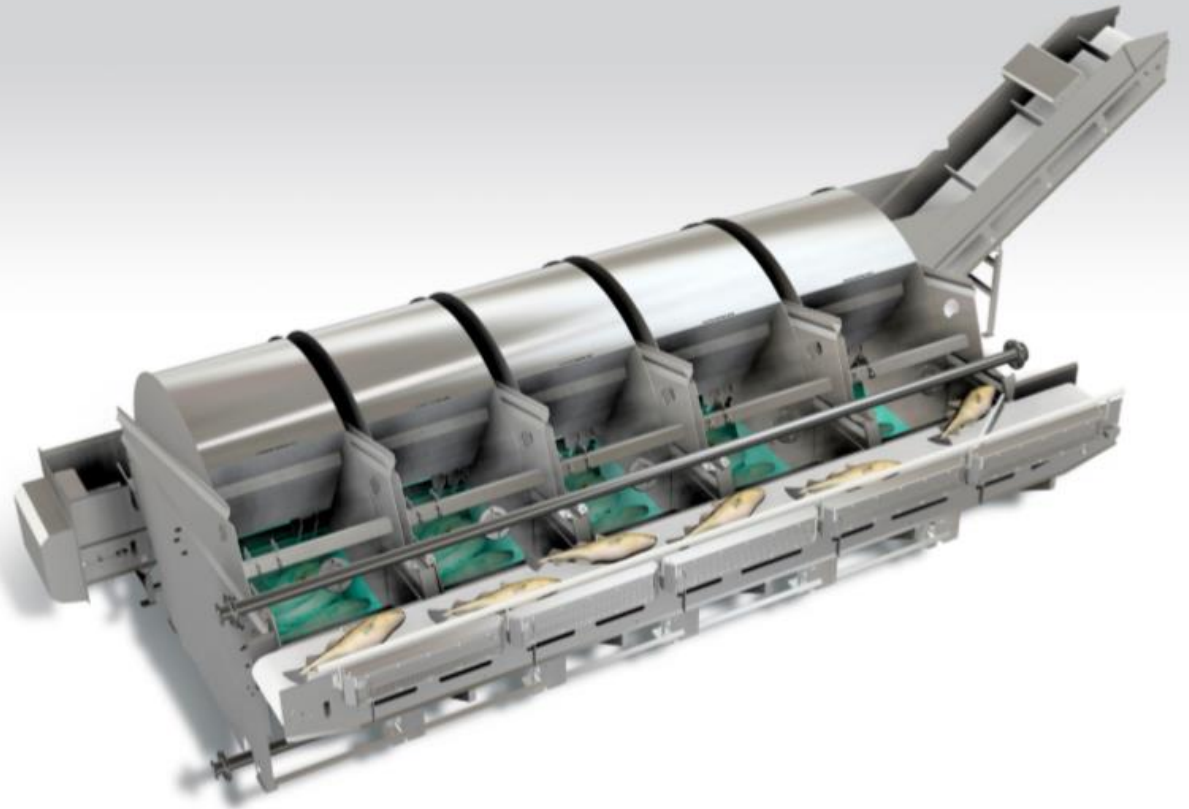


carsop



Skaginn 3X

FIFO Bleeding Wheel

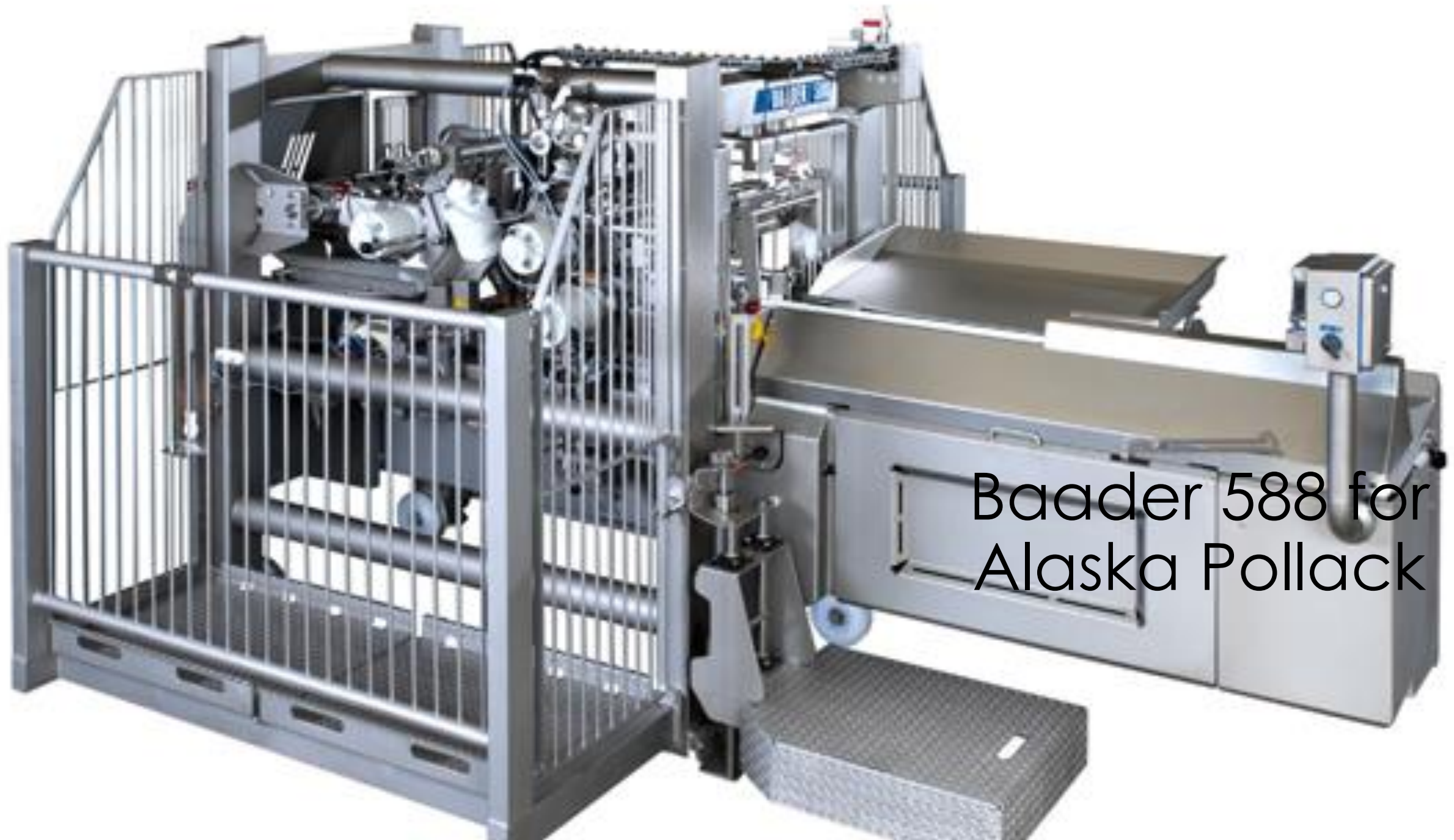


Bleeding is a critical step in fish processing. Optimal bleeding ensures the elimination of blood color in white fish and blackening in value-added (e.g. smoked) oily fish such as salmon or trout. Furthermore, efficient bleeding has been proven to reduce bacterial count and increase total product quality.

The FIFO Bleeding Wheel can be fitted into any type of workflow on land or at sea, wild or farmed as well as white or oily fish processing.



Marel 2730
Salmon
Filleting unit



Baader 588 for
Alaska Pollack

Intralox AIM

No-compromise primary packaging automation product line.

Reliable – Fast – Gentle – Simple



AIM™ revolutionizes delicate tray pack handling by enabling automation in wash-down environments. AIM provides comprehensive benefits of maximum throughput, line flexibility, and gentle product handling.



Reduce Labor



Maximize Throughput



Optimize Line Flexibility



Improve Cleanability